

DRAWING TYPE

CUSTOMER DRAWING

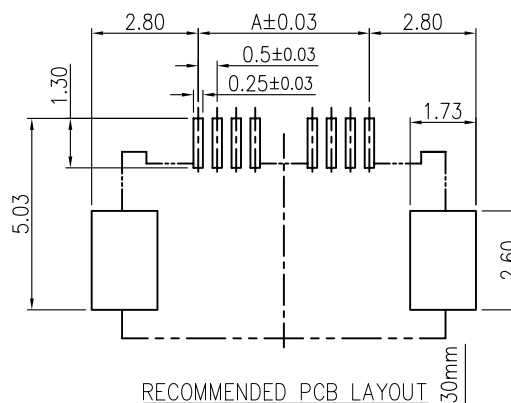
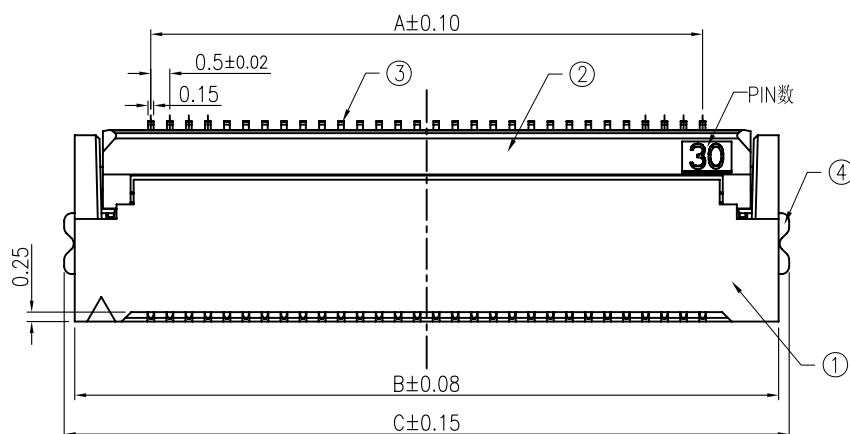
MARK

DATE

ECN NO

DESCRIPTION

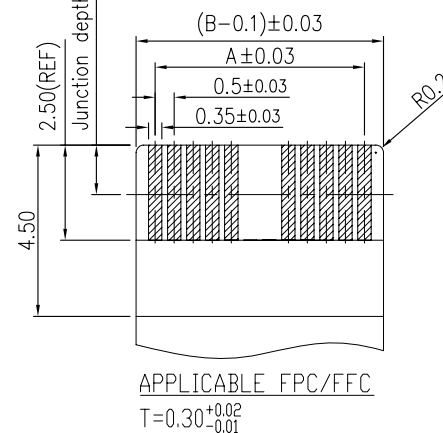
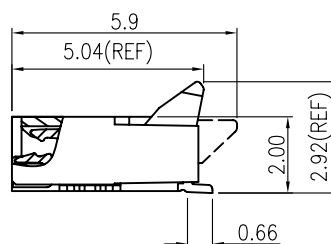
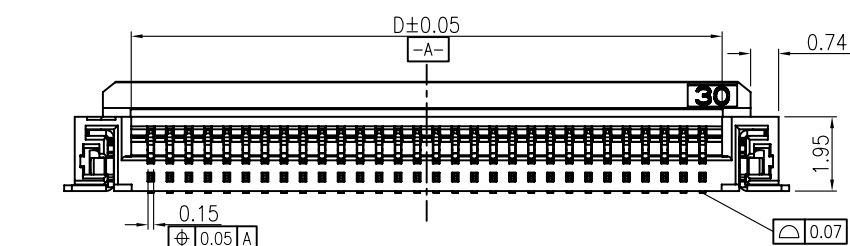
DESIGN



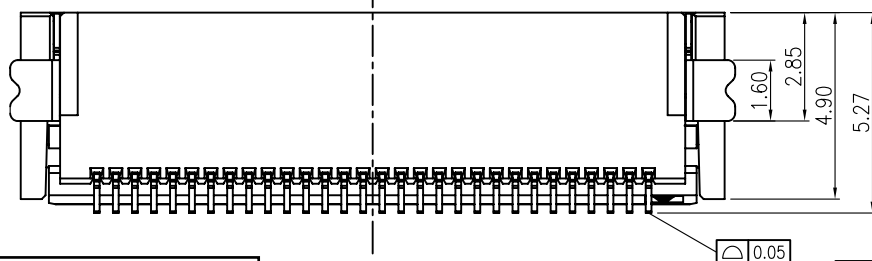
1. FPC NOT MATING CONDITION BANNED CLOSURE
2. ALL MATERIAL MUST BE COMPLY WITH ROHS
3. PART NO. LEGEND:

F601- ** 1 X 3 ** 3
① ② ③ ④ ⑤ ⑥ ⑦

- ① .SERIES NAME:F601=FPC 0.5PITCH H2.0 BACK FLIP TYPE CONNECTOR
- ② .CONTACT PIN NUMBER:**=CONTACT PIN NUMBER
- ③ .WELDING METHODS:1=SMT
- ④ .SHELLS MATERIALS/PLATING:X=MEANINGLESS CODE
- ⑤ .MAIN COLOR:3=NATURAL COLOR
- ⑥ .CONTACT PLATING SPEC:
POINT OF PLATING:30=1u";
ALL GOLD PLATING:20=1u";22=3u";23=5u";
TIN PLATING;06=ALL MATTE TIN
- ⑦ .PACKING SPEC: 3=CARRY TAPE



NO.	DIM POSITIONS	A	B	C	D
4		1.50	5.50	6.05	2.55
6		2.50	6.50	7.05	3.55
8		3.50	7.50	8.05	4.55
10		4.50	8.50	9.05	5.55
12		5.50	9.50	10.05	6.55
18		8.50	12.50	13.05	9.55
24		11.50	15.50	16.05	12.55
30		14.50	18.50	19.05	15.55
40		19.50	23.50	24.05	20.55
45		22.00	26.00	26.55	23.05
50		24.50	28.50	29.05	25.55
54		26.50	30.50	31.05	27.55
60		29.50	33.50	34.05	30.55



深圳亿沃鑫科有限公司
TEL:+86135-901-78542
FAX:+86-755-32932856
www.ewconn.com

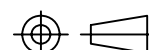
NOTE: ALL RIGHTS RESERVED,BANNED COPY!

UNLESS OTHERWISE SPECIFIED TOLERANCE			
ANG	TOL	DIM	TOL
.X	±2.0°	.X	±0.20
.XX	±1.0°	.XX	±0.10
.XXX	±0.5°	.XXX	±0.05

NO.	COMPONENTS	MATERIALS	COLOR/SPECIFICATION	QUANTITY
1	HOUSING	LCP	NATURAL UL94V-0	1 PCS
2	COVER	LCP	BLACK UL94V-0	1 PCS
3	CONTACT	PHOSPHOR BRONZE	T=0.15mm PLATING	POSITIONS
4	STATOR	BRASS	T=0.15mm PLATING	2 PCS

EWCONNECTOR

深圳亿沃鑫科技有限公司



DRAWING NO

PART NAME: FPC 0.5PITCH H2.0 BACK FLIP TYPE CONNECTOR

PART NO.

APPROVED

VERIFIED

DESIGN

DATE

UNITS

SCALE

PAGE

REV

OCEAN

2013.09.16

mm

1:1

1/1

A