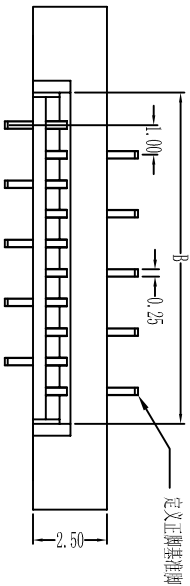


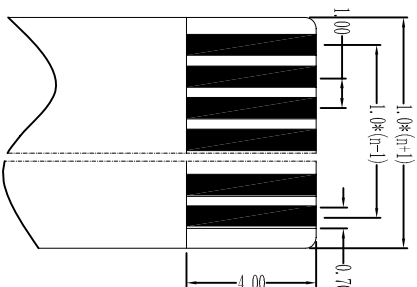
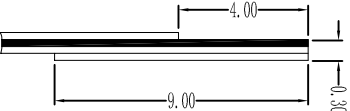
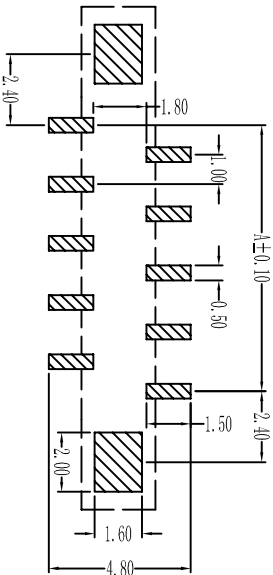
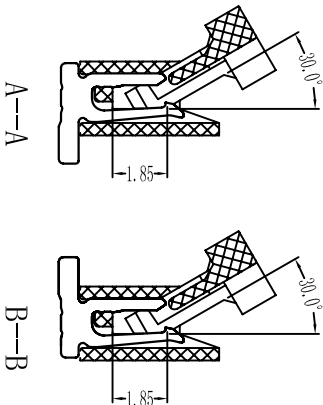
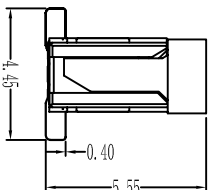
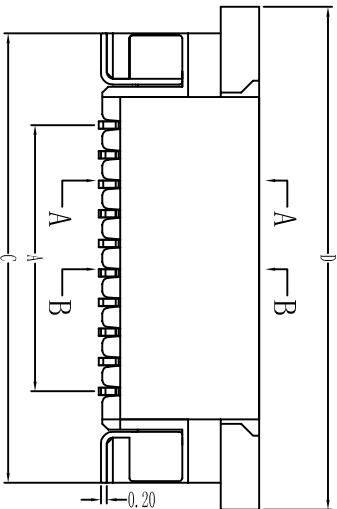
1.0mm PITCH FPC CONNECTORS



性能:

额定电流: 0.5A
额定电压: 50V
耐电压: 500V
接触电阻: $\leq 20m\Omega$
绝缘电阻: 8000Ω
工作温度: $-20^{\circ}C \sim +85^{\circ}C$

塑件 (材质): LCP, UL94V-0
锁扣 (材质): PA46, UL94V-0
插簧 (材质): 磷青铜, 镀锡/镀金
焊片 (材质): 磷青铜, 镀锡/镀金



适用扁平电缆

孔位	A	B	C	D
2	1	3.2	7.2	9
3	2	4.2	8.2	10
4	3	5.2	9.2	11
5	4	6.2	10.2	12
6	5	7.2	11.2	13
7	6	8.2	12.2	14
8	7	9.2	13.2	15
9	8	10.2	14.2	16
10	9	11.2	15.2	17
11	10	12.2	16.2	18
12	11	13.2	17.2	19
13	12	14.2	18.2	20
14	13	15.2	19.2	21
15	14	16.2	20.2	22
16	15	17.2	21.2	23
17	16	18.2	22.2	24
18	17	19.2	23.2	25
19	18	20.2	24.2	26
20	19	21.2	25.2	27
21	20	22.2	26.2	28
22	21	23.2	27.2	29
23	22	24.2	28.2	30
24	23	25.2	29.2	31
25	24	26.2	30.2	32
26	25	27.2	31.2	33
27	26	28.2	32.2	34
28	27	29.2	33.2	35
29	28	30.2	34.2	36
30	29	31.2	35.2	37
31	30	32.2	36.2	38
32	31	33.2	37.2	39
33	32	34.2	38.2	40
34	33	35.2	39.2	41
35	34	36.2	40.2	42

一沃电子实业有限公司
TEL: +86-755-36887540
FAX: +86-755-36887541
<http://www.ewconn.com>

X. \pm 0.3		X°. \pm 5°	UNITS
.X \pm 0.25		.X° \pm 2°	mm
.XX \pm 0.20		.XX° \pm 1°	
.XXX \pm 0.10		.XXX° \pm 0.5°	
		FINISH	
		Q'TY	
NAME (INTENDED USE)		E-World Electronic Industry Ltd	
1.0mm FPC (E型) 立贴式(有焊片正脚)			
PART NO. (INTENDED USE)		TITLE:	
FPC1036V		1.0mm FPC (E型) 立贴式(有焊片正脚)	
APRD:		DWG No.:	
CHRD:		100K15-EDB0000000	
DR:		YLZ 2011.09.28	
		SCALE	SHEET
		1/1	1/1
		REV.	A