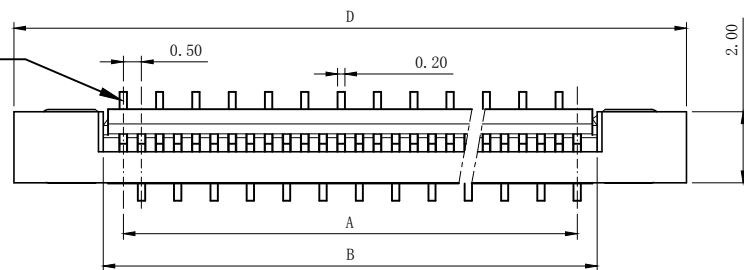


PITCH 0.5mm FPC CONNECTOR SMT TYPE

定义反脚基准脚



注:

"▲"处尺寸为

4Pin~29Pin: 1.50mm;

30Pin~39Pin: 1.60mm;

40Pin~60Pin: 1.70mm;

注:

"■"处尺寸为

4Pin~29Pin: 4.70mm;

30Pin~39Pin: 4.80mm;

40Pin~60Pin: 4.90mm;

性能:

额定电流: 0.4A

额定电压: 50V

耐电压: 200V

接触电阻: $\leq 20m\Omega$ 绝缘电阻: 500M Ω

工作温度: -20℃~+85℃

塑件(材质): LCP, UL94V-0

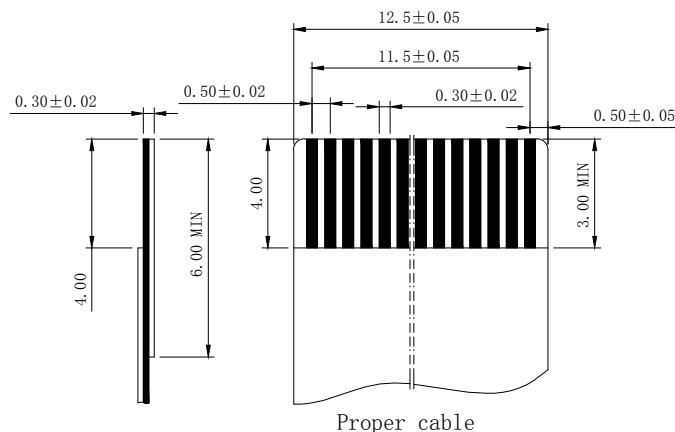
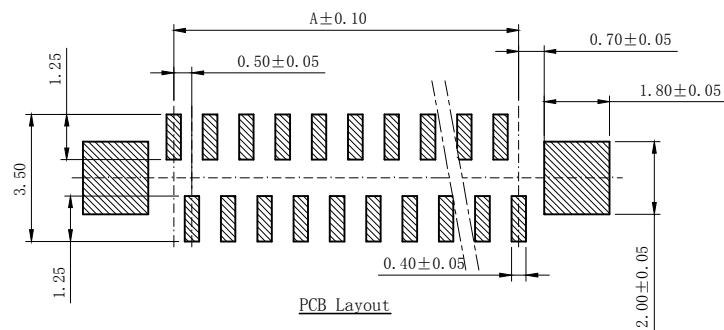
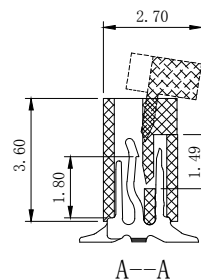
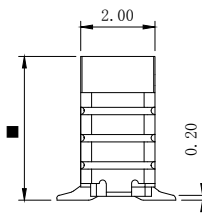
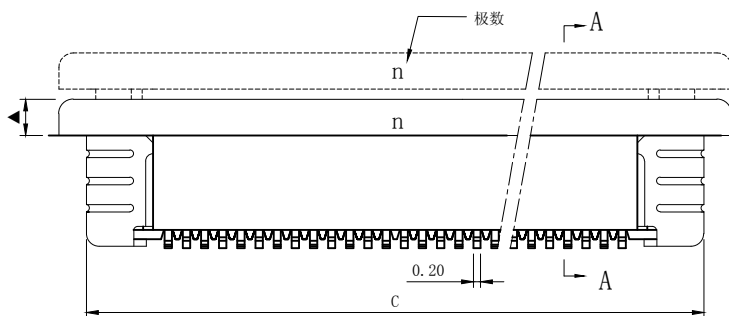
锁扣(材质): 见下面备注

插簧(材质): 磷青铜, 镀锡/镀金

焊片(材质): 磷青铜, 镀锡/镀金

注: 当PIN数为30PIN或以下时, 锁扣材质为PA46.

当PIN数为30PIN以上时, 锁扣材质为LCP



孔位	A	B	C	D
4	1.50	2.60	6.35	7.65
5	2.00	3.10	6.85	8.15
6	2.50	3.60	7.35	8.65
7	3.00	4.10	7.85	9.15
8	3.50	4.60	8.35	9.65
9	4.00	5.10	8.85	10.15
10	4.50	5.60	9.35	10.65
11	5.00	6.10	9.85	11.15
12	5.50	6.60	10.35	11.65
13	6.00	7.10	10.85	12.15
14	6.50	7.60	11.35	12.65
15	7.00	8.10	11.85	13.15
16	7.50	8.60	12.35	13.65
17	8.00	9.10	12.85	14.15
18	8.50	9.60	13.35	14.65
19	9.00	10.10	13.85	15.15
20	9.50	10.60	14.35	15.65
21	10.00	11.10	14.85	16.15
22	10.50	11.60	15.35	16.65
23	11.00	12.10	15.85	17.15
24	11.50	12.60	16.35	17.65
25	12.00	13.10	16.85	18.15
26	12.50	13.60	17.35	18.65
27	13.00	14.10	17.85	19.15
28	13.50	14.60	18.35	19.65
29	14.00	15.10	18.85	20.15
30	14.50	15.60	19.35	20.65
31	15.00	16.10	19.85	21.15
32	15.50	16.60	20.35	21.65
33	16.00	17.10	20.85	22.15
34	16.50	17.60	21.35	22.65
35	17.00	18.10	21.85	23.15
36	17.50	18.60	22.35	23.65
37	18.00	19.10	22.85	24.15
38	18.50	19.60	23.35	24.65
39	19.00	20.10	23.85	25.15
40	19.50	20.60	24.35	25.65
41	20.00	21.10	24.85	26.15
42	20.50	21.60	25.35	26.65
43	21.00	22.10	25.85	27.15
44	21.50	22.60	26.35	27.65
45	22.00	23.10	26.85	28.15
46	22.50	23.60	27.35	28.65
47	23.00	24.10	27.85	29.15
48	23.50	24.60	28.35	29.65
49	24.00	25.10	28.85	30.15
50	24.50	25.60	29.35	30.65
51	25.00	26.10	29.85	31.15
52	25.50	26.60	30.35	31.65
53	26.00	27.10	30.85	32.15
54	26.50	27.60	31.35	32.65
55	27.00	28.10	31.85	33.15
56	27.50	28.60	32.35	33.65
57	28.00	29.10	32.85	34.15
58	28.50	29.60	33.35	34.65
59	29.00	30.10	33.85	35.15
60	29.50	30.60	34.35	35.65

一沃电子实业有限公司
TEL:+86-755-36887540
FAX:+86-755-36887541
<http://www.ewconn.com>

X. ± 0.3	X.° ± 5°	UNITS mm	NAME (INTENDED USE)	EWCONNECTOR			
.X ± 0.25	.X° ± 2°		MAT'L	0.5mm FPC (A 型) 立贴式反脚	E-World Electronic Industry Ltd		
.XX ± 0.20	.XX° ± 1°	FINISH	PART NO. (INTENDED USE)	TITLE:			
.XXX ± 0.10	.XXX° ± 0.5°		EW537V	0.5mm FPC (A 型) 立贴式反脚			
THESE DRAWINGS AND SPECIFICATIONS ARE THE PROPERTY OF DE RUI ELECTRON FACTORY AND SHALL NOT BE REPRODUCED, COPIED OR USED IN ANY MANNER WITHOUT THE PRIOR WRITTEN CONSENT OF DE RUI ELECTRON FACTORY			APPD:	DWG NO.:			
				050K03-AFB0000000			
		Q' TY	CHKD:				
		DR:	YLZ 2011.09.28				
				SCALE		SHEET	REV.
				1/1		1/1	A