

## PITCH 0.5mm FPC CONNECTOR SMT TYPE

定义正脚基准脚

性能:

额定电流: 0.4A

额定电压: 50V

耐电压: 200V

接触电阻:  $\leq 20\text{m}\Omega$ 绝缘电阻:  $500\text{M}\Omega$ 工作温度:  $-20^{\circ}\text{C} \sim +85^{\circ}\text{C}$ 

塑件(材质): LCP, UL94V-0

锁扣(材质): 见下面备注

插簧(材质): 磷青铜, 镀锡/镀金

焊片(材质): 磷青铜, 镀锡/镀金

注: 当PIN数为30PIN或以下时, 锁扣材质为PA46.

当PIN数为30PIN以上时, 锁扣材质为LCP

注:

“▲”处尺寸为

4Pin~29Pin: 1.50mm;

30Pin~39Pin: 1.60mm;

40Pin~60Pin: 1.70mm;

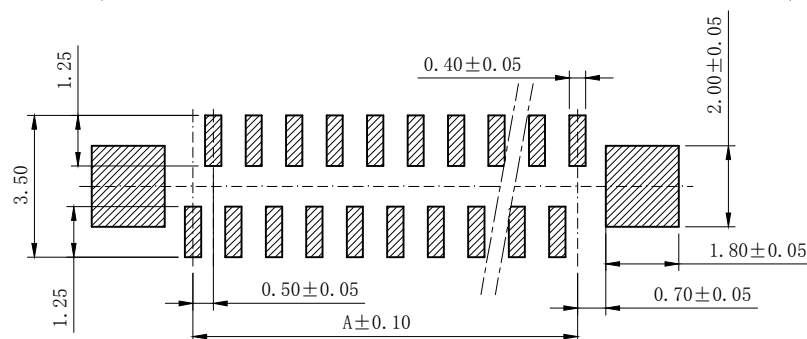
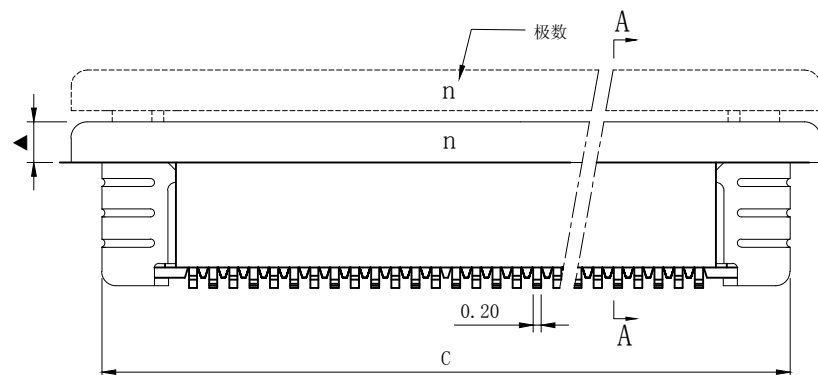
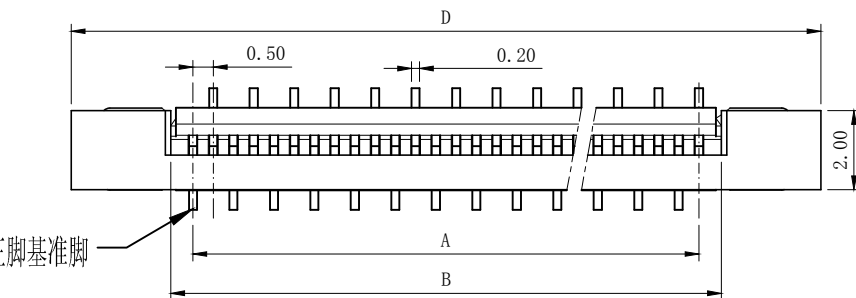
注:

“■”处尺寸为

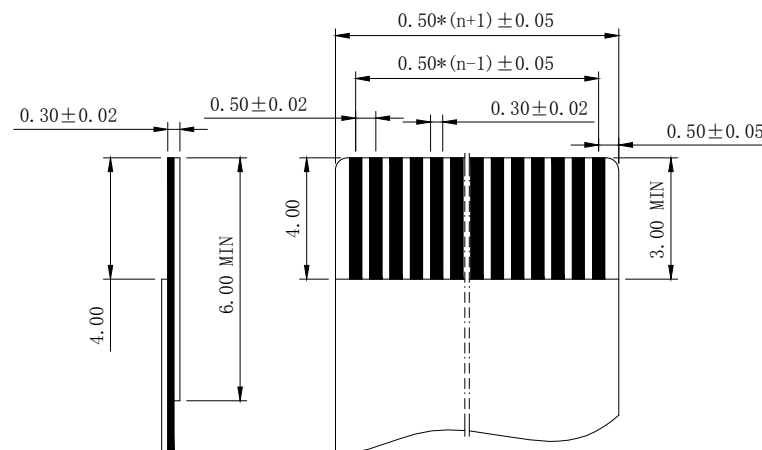
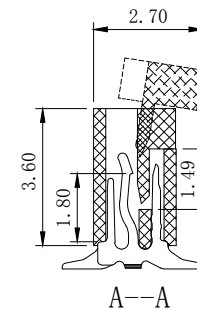
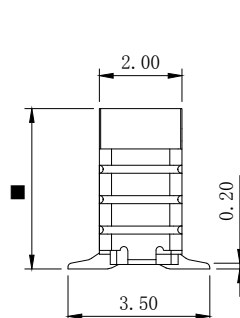
4Pin~29Pin: 4.70mm;

30Pin~39Pin: 4.80mm;

40Pin~60Pin: 4.90mm;



PCB Layout



适用扁平电缆线

孔位	A	B	C	D
4	1.50	2.60	6.35	7.65
5	2.00	3.10	6.85	8.15
6	2.50	3.60	7.35	8.65
7	3.00	4.10	7.85	9.15
8	3.50	4.60	8.35	9.65
9	4.00	5.10	8.85	10.15
10	4.50	5.60	9.35	10.65
11	5.00	6.10	9.85	11.15
12	5.50	6.60	10.35	11.65
13	6.00	7.10	10.85	12.15
14	6.50	7.60	11.35	12.65
15	7.00	8.10	11.85	13.15
16	7.50	8.60	12.35	13.65
17	8.00	9.10	12.85	14.15
18	8.50	9.60	13.35	14.65
19	9.00	10.10	13.85	15.15
20	9.50	10.60	14.35	15.65
21	10.00	11.10	14.85	16.15
22	10.50	11.60	15.35	16.65
23	11.00	12.10	15.85	17.15
24	11.50	12.60	16.35	17.65
25	12.00	13.10	16.85	18.15
26	12.50	13.60	17.35	18.65
27	13.00	14.10	17.85	19.15
28	13.50	14.60	18.35	19.65
29	14.00	15.10	18.85	20.15
30	14.50	15.60	19.35	20.65
31	15.00	16.10	19.85	21.15
32	15.50	16.60	20.35	21.65
33	16.00	17.10	20.85	22.15
34	16.50	17.60	21.35	22.65
35	17.00	18.10	21.85	23.15
36	17.50	18.60	22.35	23.65
37	18.00	19.10	22.85	24.15
38	18.50	19.60	23.35	24.65
39	19.00	20.10	23.85	25.15
40	19.50	20.60	24.35	25.65
41	20.00	21.10	24.85	26.15
42	20.50	21.60	25.35	26.65
43	21.00	22.10	25.85	27.15
44	21.50	22.60	26.35	27.65
45	22.00	23.10	26.85	28.15
46	22.50	23.60	27.35	28.65
47	23.00	24.10	27.85	29.15
48	23.50	24.60	28.35	29.65
49	24.00	25.10	28.85	30.15
50	24.50	25.60	29.35	30.65
51	25.00	26.10	29.85	31.15
52	25.50	26.60	30.35	31.65
53	26.00	27.10	30.85	32.15
54	26.50	27.60	31.35	32.65
55	27.00	28.10	31.85	33.15
56	27.50	28.60	32.35	33.65
57	28.00	29.10	32.85	34.15
58	28.50	29.60	33.35	34.65
59	29.00	30.10	33.85	35.15
60	29.50	30.60	34.35	35.65

一沃电子实业有限公司  
TEL:+86-755-36887540  
FAX:+86-755-36887541  
<http://www.ewconn.com>

X. ± 0.3	X.° ± 5°	UNITS mm	NAME (INTENDED USE)	<div>EWCONNECTOR</div> E-World Electronic Industry Ltd			
.X ± 0.25	.X° ± 2°		0.5mm FPC (A 型) 立贴式正脚				
.XX ± 0.20	.XX° ± 1°		PART NO. (INTENDED USE)	TITLE:			
.XXX ± 0.10	.XXX° ± 0.5°		EW536V	0.5mm FPC (A 型) 立贴式正脚			
THESE DRAWINGS AND SPECIFICATIONS ARE THE PROPERTY OF DE RUI ELECTRON FACTORY AND SHALL NOT BE REPRODUCED, COPIED OR USED IN ANY MANNER WITHOUT THE PRIOR WRITTEN CONSENT OF DE RUI ELECTRON FACTORY		FINISH	APPD:	DWG NO. : 050K01-AUB0000000			
		Q' TY	CHKD:	<div></div>			
		DR: YLZ 2011.09.28					
				SCALE	SHEET	REV.	
				1/1	1/1	A	