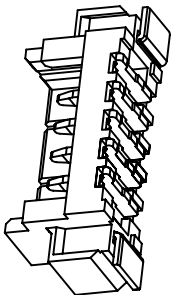
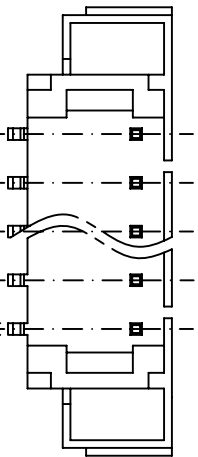


14	13	12	11	10	9	8	7	6	5	4	3	2	1
									REV.	ECO NO.	DATE	SIGN	DESCRIPTION
									A		08/05/09		RELEASED



### MATERIAL

WAFER: NYLON 46 UL 94V-0 OR LCP

CONTACTS: BRASS

PLATING: TIN OVER NICKEL

### SPECIFICATION

CURRENT RATING: 1A AC, DC

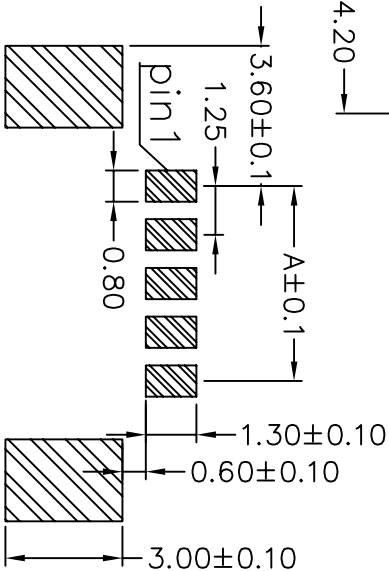
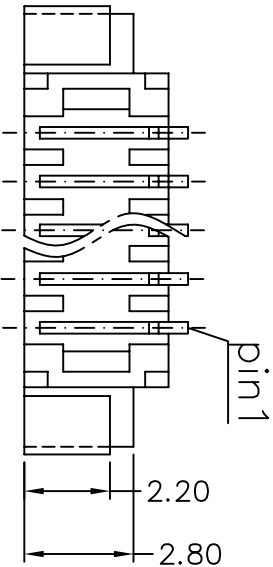
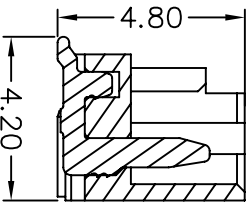
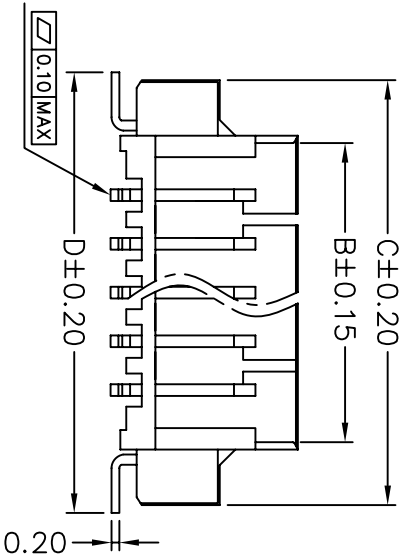
VOLTAGE RATING: 250V AC, DC

OPERATING TEMPERATURE: -25°C ~ +85°C

Contact Resistance: 20mΩ Max

INSULATION RESISTANCE: 1000MΩ MIN

WITHSTANDING VOLTAGE: 500V AC/MINUTE



RECOMMENDED P.C.B LAYOUT

PORT NO	A	B	C	D
1252-WV-02P	1.25	3.10	7.35	7.55
1252-WV-03P	2.50	4.35	8.60	8.80
1252-WV-04P	3.75	5.60	9.85	10.05
1252-WV-05P	5.00	6.85	11.10	11.30
1252-WV-06P	6.25	8.10	12.35	12.55
1252-WV-07P	7.50	9.35	13.60	13.80
1252-WV-08P	8.75	10.60	14.85	15.05
1252-WV-09P	10.00	11.85	16.10	16.30
1252-WV-10P	11.25	13.10	17.35	17.55
1252-WV-11P	12.50	14.35	18.60	18.80
1252-WV-12P	13.75	15.60	19.85	20.05
1252-WV-13P	15.00	16.85	21.10	21.30
1252-WV-14P	16.25	18.10	22.35	22.55
1252-WV-15P	17.50	19.35	23.60	23.80
1252-WV-16P	18.75	20.60	24.85	25.05

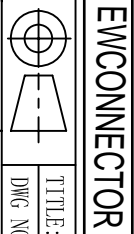
一沃电子实业有限公司  
TEL: +86-755-36887540  
FAX: +86-755-36887541  
<http://www.ewconn.com>

TOLERANCE (UNLESS SPECIFIED)	
LINEAR	ANGLE
.X ±0.25	X° XX
.XX ±0.15	.X° XX
.XXX ±0.10	.XX° XX

DATE	08/05/09
SCALE	1/1
UNIT	mm

DAR. BY	C H L
CHK. BY	H D J
APP. BY	

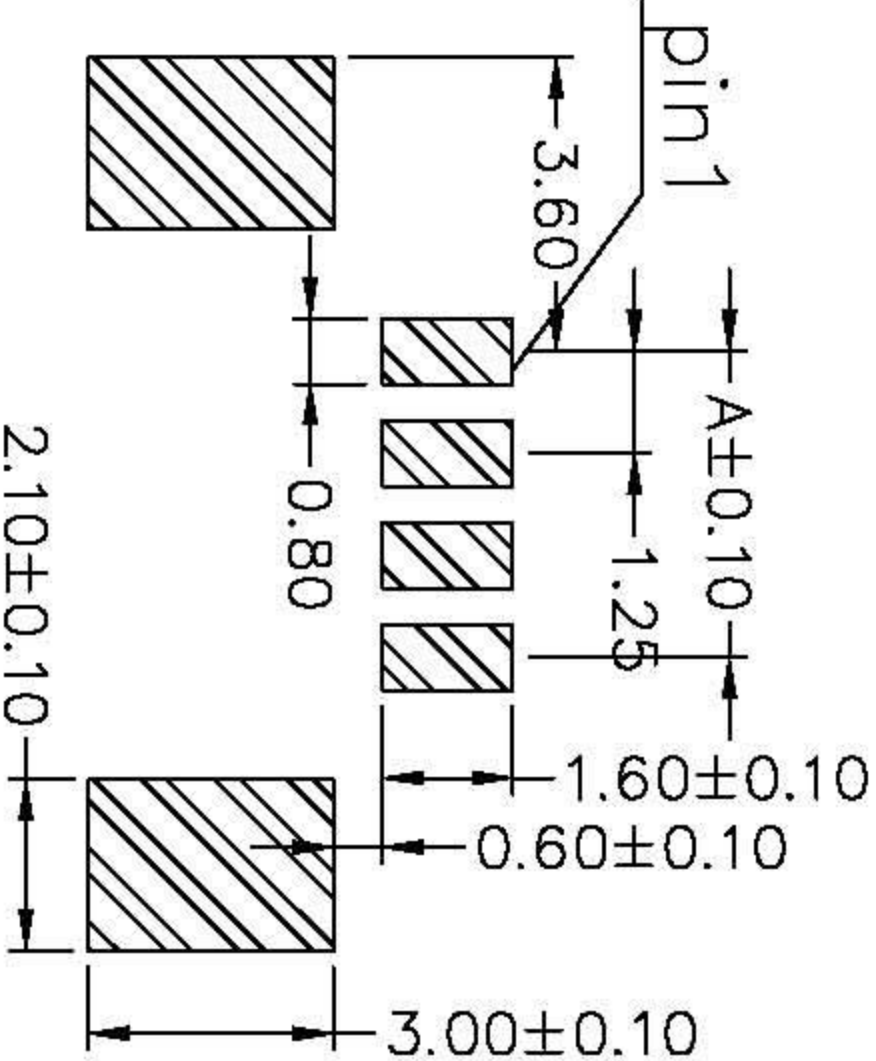
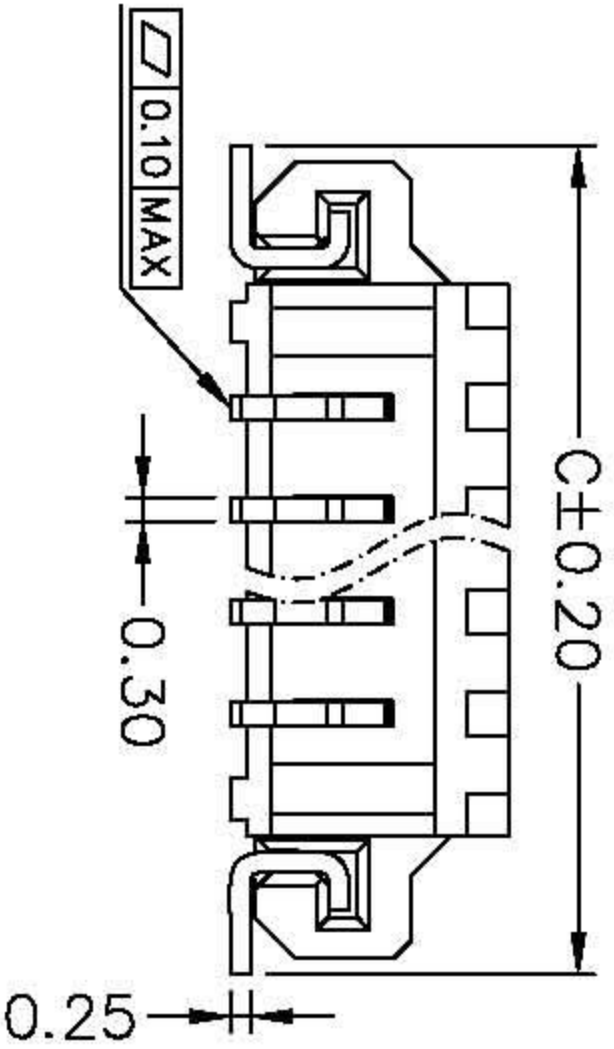
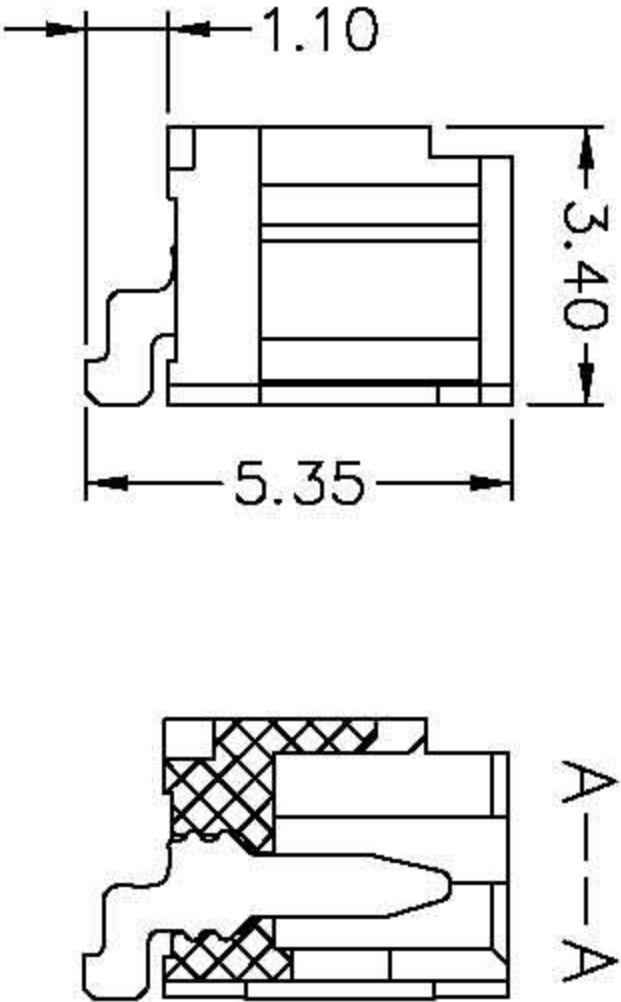
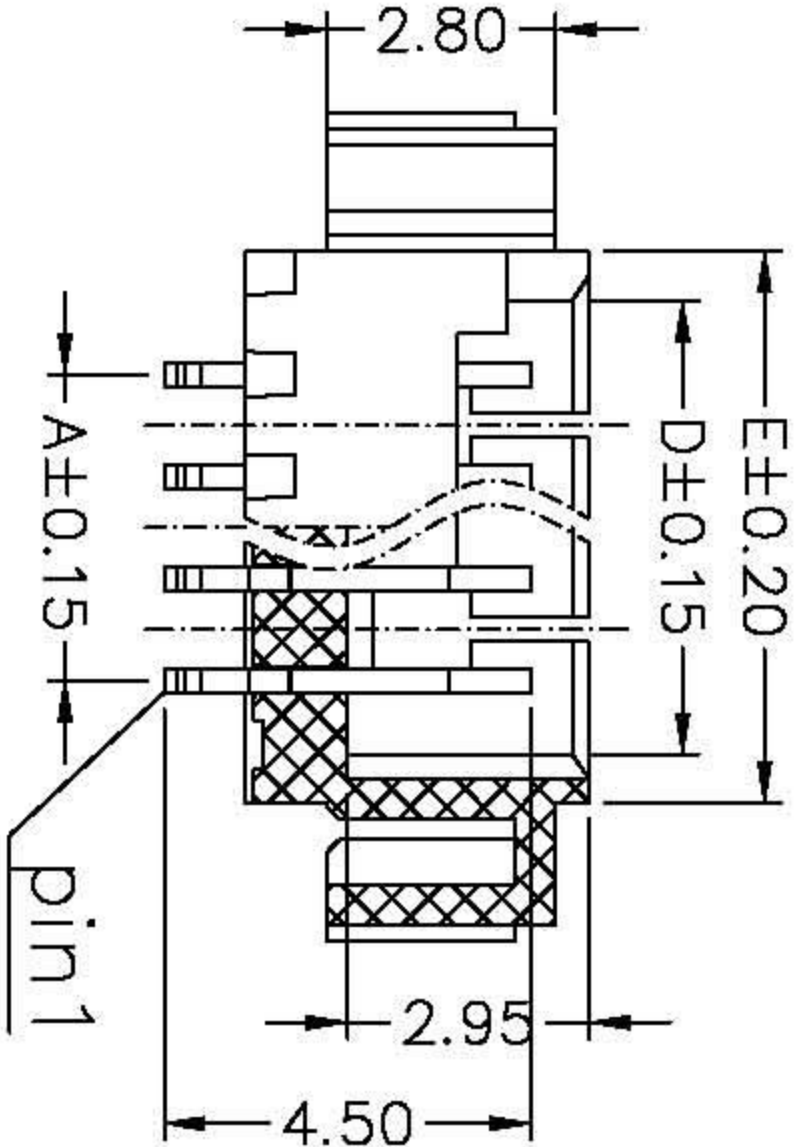
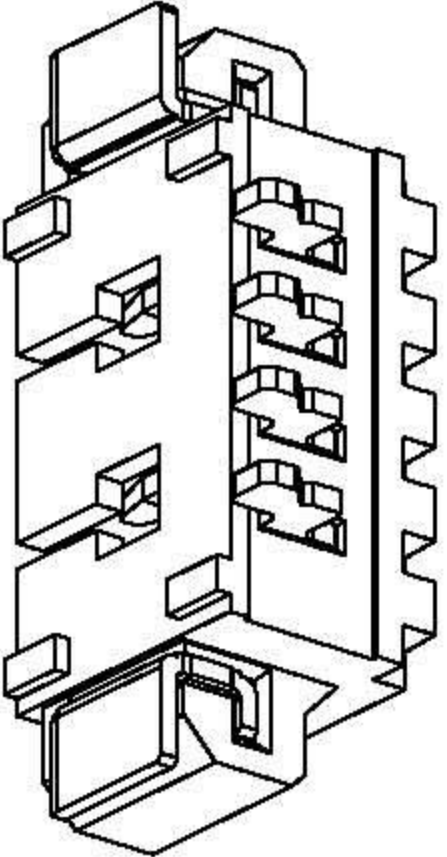
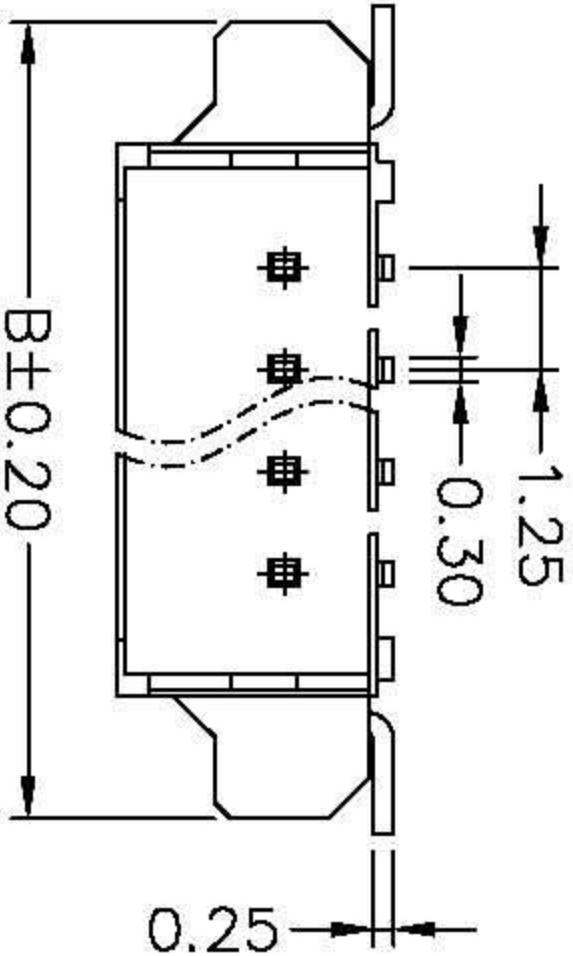
MATERIAL	
FINISH	
PART NO.	



E-World Electronic Industry Ltd

TITLE: MX1.25 Vertical SMT WAFER  
DWG NO. EWWB1252-WV-XXP

REV.	A
------	---



RECOMMENDED P.C.B LAYOUT

TOLERANCE UNLESS SPECIFIED	
L INEAR	ANGLE
.X +0.25	X° XX
.XX +0.15	.X° XX
.XXX ±0.10	.XX° XX

DATE	DAR. BY	C H L	MATERIAL
08/05/09			
SCALE	CHK. BY	H D J	FINISH
1/1			
UNIT	APP. BY	PART NO.	
mm			

EWCONNECTOR		E-World Electronic Industry Ltd	
TITLE:		MX1.25 R/A SMT Wafer	
DWG NO.		EWWB1252-WR-XXP	
REV.		A	

REV.	ECO NO.	DATE	SIGN	DESCRIPTION
A		08/05/09		RELEASED

**MATERIAL**  
WAFER: NYLON 46 UL 94V-0 OR LCP  
CONTACTS: BRASS  
PLATING: TIN OVER NICKEL

**SPECIFICATION**  
Current Rating: 1A AC, DC  
Voltage Rating: 250V AC, DC  
OPERATING TEMPERATURE: -25° C~+85° C  
Contact Resistance: 20mΩ Max  
Insulation Resistance: 1000M Min  
Withstanding Voltage: 500V AC/minute

Port No	A	B	C	D	E
1252-WR-02P	1.25	7.25	7.65	3.05	4.20
1252-WR-03P	2.50	8.50	8.90	4.30	5.45
1252-WR-04P	3.75	9.75	10.15	5.55	6.70
1252-WR-05P	5.00	11.00	11.40	6.80	7.95
1252-WR-06P	6.25	12.25	12.65	8.05	9.20
1252-WR-07P	7.50	13.50	13.90	9.30	10.45
1252-WR-08P	8.75	14.75	15.15	10.55	11.70
1252-WR-09P	10.00	16.00	16.40	11.80	12.95
1252-WR-10P	11.25	17.25	17.65	13.05	14.20
1252-WR-11P	12.50	18.50	18.90	14.30	15.45
1252-WR-12P	13.75	19.75	20.15	15.55	16.70
1252-WR-13P	15.00	21.00	21.40	16.80	17.95
1252-WR-14P	16.25	22.25	22.65	18.05	19.20
1252-WR-15P	17.50	23.50	23.90	19.30	20.45
1252-WR-16P	18.75	24.75	25.15	20.55	21.70